

# ‘Just Someone I Know’ Lesson Plans



Thursday, 09 November 2017

## Just Someone I Know: a short film

### Lesson Launch



**Think:** On your own, write as many of your ideas as you can.



**Pair:** With your partner, share your ideas. Add them in **green** pen!



**Share:** Each pair needs to give on of their ideas. You can't say the same as any other group!



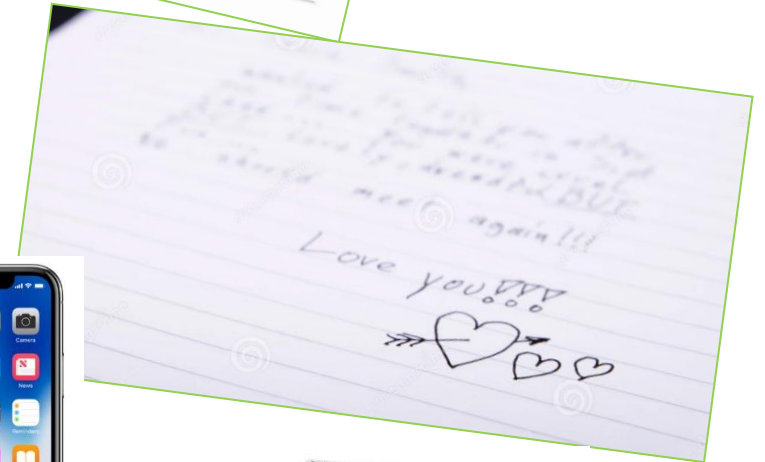
What problems and dangers might a child that is missing school face?

**Challenge:** How might the risks and dangers be different if the child is missing from education for one day, one week, one term or one year?

**Learning objective:** to understand risks faced by children missing in education



**Playing detective** – you have found someone's bag and you want to return it to them. You will need to look inside to find some ID. What can you work out about the bag's owner?



Thursday, 09 November 2017

## Just Someone I Know

**Learning objective:** to understand the dangers of Child Sexual Exploitation (CSE) and Grooming

### Progress Indicators

I am able to define CSE and grooming

I can give clear examples of the risks faced by children from CSE and grooming

I can explain possible solutions to the problem of CSE and grooming



**Grooming** is when someone builds an emotional connection with a child to gain their trust for the purposes of sexual abuse, sexual exploitation or trafficking. Children and young people can be **groomed** online or face-to-face, by a stranger or by someone they know - for example a family member, friend or professional.

**Child sexual exploitation (CSE)** is a type of sexual abuse in which children are sexually exploited for money, power or status. Children or young people may be tricked into believing they're in a loving, consensual relationship. They might be invited to parties and given drugs and alcohol. They may also be groomed online.



# Just Someone I Know: a short film.

Watch the film all the way through. Then watch it again while completing your handout. Your teacher may pause the film after each scene.

**Lesson Launch**

What problems and dangers might a child that is missing school face?

**Think:** On your own, write as many of your ideas as you can.

**Pair:** With your partner, share your ideas. Add them in **green** pen!

**Share:** Each pair needs to give one of their ideas. You can't say the same as any other group!

**Challenge:** How might the risks and dangers be different if the child is missing from education for one day, one week, one term or one year?

List three warning signs that a child is at risk of CSE or is being groomed?

**Learning objective:** to understand the dangers of Child Sexual Exploitation (CSE) and grooming

**Just Someone I Know: a short film**

Scene 1 summary

Scene 2 summary

Scene 3 summary

Scene 4 summary

Scene 5 summary

Scene 6 summary

What do you think this film can teach young people?

**koath**

**Sunrise**  
reopening young people's eyes

**ChildLine**  
0800 1111

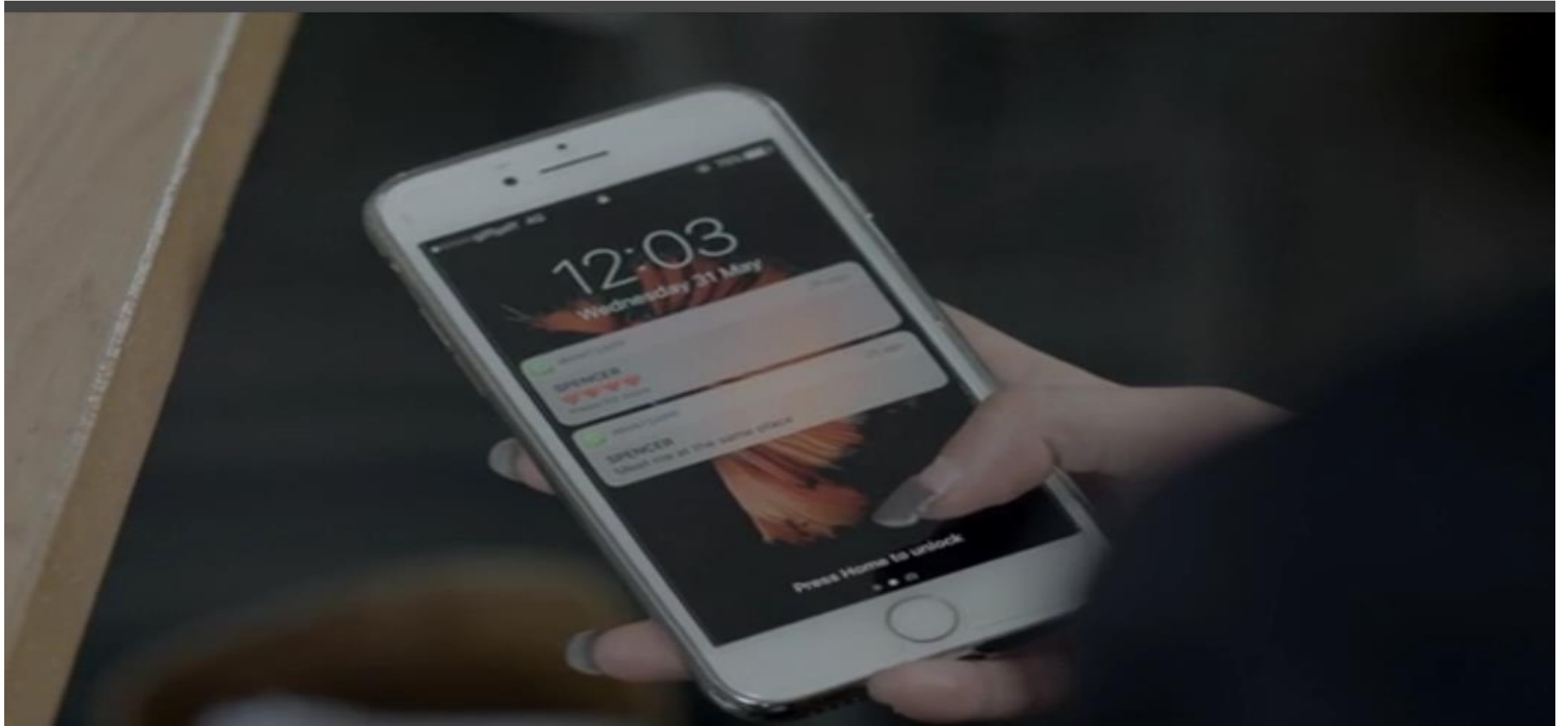
**Challenge:** How can we reduce the risks to young people?

<https://www.youtube.com/watch?v=ThS21xx25BM>

# Just Someone I Know - Scene 1



# Just Someone I Know - Scene 2





# Just Someone I Know - Scene 3



# Just Someone I Know - Scene 4



# Just Someone I Know - Scene 5



# Just Someone I Know - Scene 6





## Lesson Launch

## Just Someone I Know: a short film

What problems and dangers might a child that is missing school face?

**Think:** On your own, write as many of your ideas as you can.

**Pair:** With your partner, share your ideas. Add them in **green** pen!

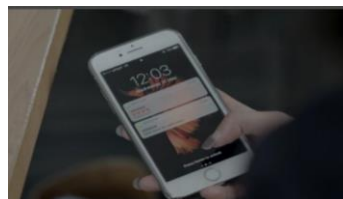
**Share:** Each pair needs to give one of their ideas. You can't say the same as any other group!

### Challenge:

How might the risks and dangers be different if the child is missing from education for one day, one week, one term or one year?



List **three warning signs** that a child is at risk of CSE or is being groomed?



Scene 1 summary

Scene 2 summary

Scene 3 summary

Scene 4 summary

Scene 5 summary

Scene 6 summary

What do you think this film can teach young people?

kooth



Sunrise  
Keeping young people safe



Challenge: How can we reduce the risks to young people?



## Good and bad relationships

- In a good relationship, both people want what's best for each other.
- Some people make you think they are your friend, boyfriend or girlfriend, but really they might be just using you.
- Some people make young people feel special (e.g. giving them gifts or paying them compliments) in order to gain control over them.
- Some people use pressure and threats to try to gain control over others.



How can you tell when a situation is unsafe, and set boundaries about what you want to do and don't want to do?

How can you tell if someone wants a relationship for the right or wrong reasons?

People to call if you are worried about someone



Help in Rochdale -  
The Sunrise Team

Get in touch  
•0161 856 1734  
•[sunrise.rochdale@gmp.police.uk](mailto:sunrise.rochdale@gmp.police.uk)  
The Sunrise Team  
Rochdale Police Station  
The Holme  
The Esplanade  
Rochdale OL16 1AG



A National  
Crime Agency  
command

<https://www.thinkuknow.co.uk/>

In school: speak to a teacher.  
INSERT NAMES HERE are the  
designated safeguarding officers



<https://kooth.com/>

# Task: To create a newspaper article explaining grooming and Child Sexual Exploitation.

## Success Criteria:

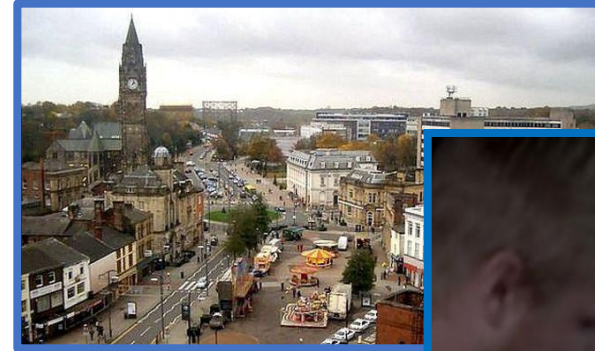
- What are grooming and CSE?
- What are the warning signs that someone is being groomed or at risk of CSE?
- Identify groups that can help young people at risk.
- Explain what can be done to tackle the problem.

**The Daily Kingdom**  
Tuesday Oct. 20

[Large dashed box for headline]

[Two columns of lines for text]

Reported by \_\_\_\_\_



**Child sexual exploitation (CSE)** is a type of sexual abuse in which children are sexually exploited for money, power or status. Children or young people may be tricked into believing they're in a loving, consensual relationship. They might go to parties and given drugs and alcohol.

They may also be groomed online.

**Grooming** is when someone builds an emotional connection with a child to gain their trust for the purposes of sexual abuse, sexual exploitation or trafficking. Children and young people can be **groomed** online or face-to-face, by a stranger or by someone they know - for example a family member, friend or professional.

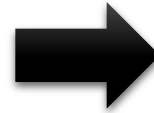


# Peer-assessment

Choose one WWW and one EBI from the options below:

## WWW

- What are grooming and CSE?
- What are the warning signs that someone is being groomed or at risk of CSE?
- Identify groups that can help young people at risk.
- Explain what can be done to tackle the problem.



## EBI

- Can you explain what grooming and CSE are?
- Can you explain warning signs that someone is being groomed or at risk of CSE?
- Can you identify groups that can help young people at risk.
- Can you explain what can be done to tackle the problem.

**The Daily Kingdom** \_\_\_\_\_ Tuesday Oct. 20



Reported by \_\_\_\_\_

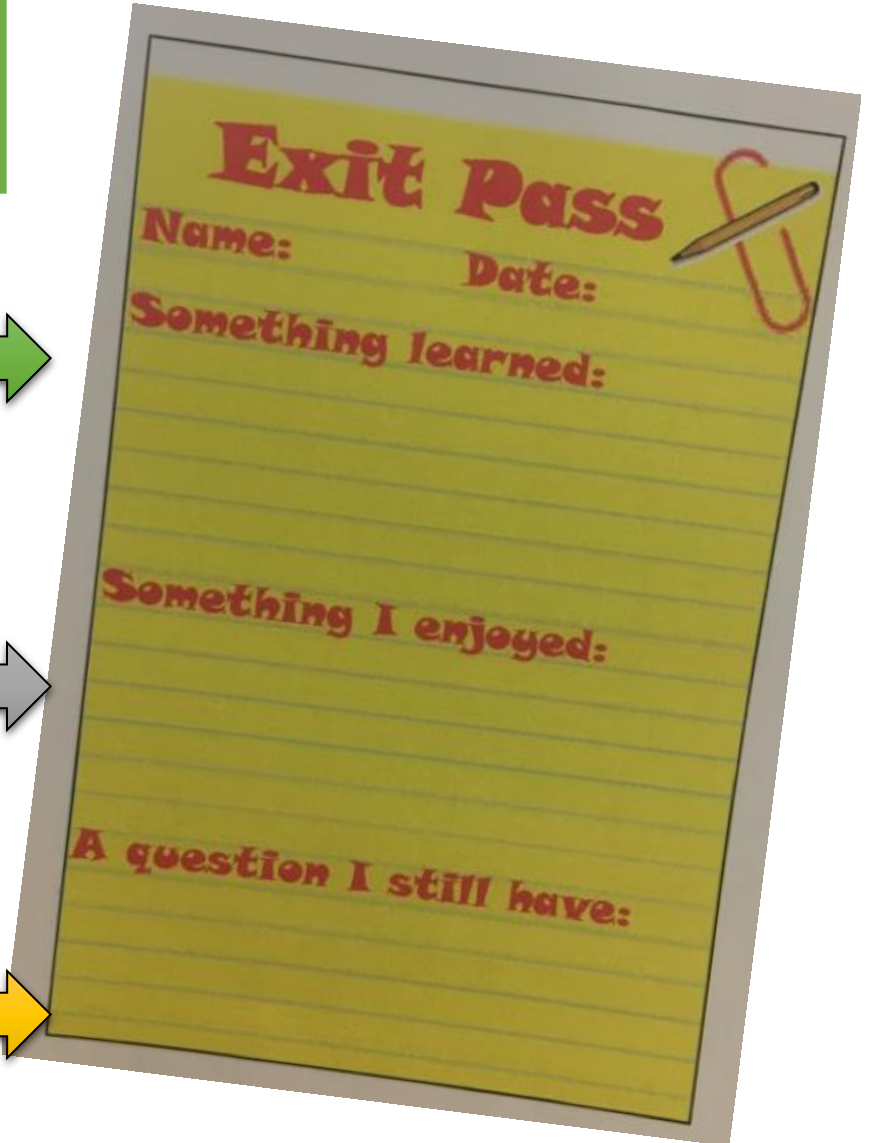
# Exit pass

Complete the exit pass in order to leave the lesson!

Something new that you have learnt  
in the lesson

Something that you enjoyed in the  
lesson

A question that you would like  
answering about today's lesson



**Exit Pass**

Name: \_\_\_\_\_ Date: \_\_\_\_\_

Something learned:

Something I enjoyed:

A question I still have:

The form is a yellow sheet of lined paper with a red paperclip icon in the top right corner. It contains three sections for student feedback: 'Name:', 'Date:', 'Something learned:', 'Something I enjoyed:', and 'A question I still have:'.